



FACULTY OF DENTISTRY

Student Handbook

2025-2026

Message from the Dean

The Near East University Faculty of Dentistry, since its establishment in 2007, has continuously and effectively sustained its functions across all levels, driven by the profound responsibility of being the inaugural Faculty of Dentistry in Cyprus, a strategically pivotal location within the Near East region. This year, the Faculty is honored and excited to be graduating its 15th cohort, while concurrently maintaining its educational programs in both Turkish and English.

To date, a total of over 2,000 dental professionals have successfully completed their training and graduated from our Faculty. Our dedicated building on campus accommodates administrative, educational, clinical, and research activities. Equipped with contemporary tools and apparatus, the Faculty features pre-clinical simulation laboratories, a primary diagnostic center utilizing the latest imaging techniques, a computer-aided three-dimensional modeling laboratory, a sedation unit dedicated to patients with special needs, advanced-level clinics serving across eight departments (Anabilim Dalları), and fully-equipped operating theatres, positioning the Faculty as a preferred center for patients. In parallel with our increasing patient capacity, which includes coverage under the Social Security Institution (SGK), our trainees are able to conduct more effective clinical practice within the integrated clinic setting. In the first three years of our young and dynamic faculty, students are instructed in basic medical and dental sciences through pre-clinical education; in the final two years, they provide oral and dental healthcare services to patients in the clinics, under the direct supervision of our specialized academic staff. Furthermore, we maintain professional technician laboratories for the fabrication of all types of fixed and removable prosthetic applications used in patient treatments, along with a computer-aided design and instruction center.

Allowing our students time for social activities is also among our fundamental foresight. Our curricula are continually reviewed to align with the European Credit Transfer and Accumulation System (ECTS), thereby ensuring the capacity to cultivate skilled dental practitioners and achieve optimal patient satisfaction in a highly competitive environment where the rate of knowledge renewal is exceptionally high. Our Vision is to be a faculty recognized at all national and international levels, distinguished by a reputable structure of students and academic staff, and whose graduates are selectively sought after everywhere. Our Mission is to fulfill our students' educational expectations at a contemporary standard, and to cultivate successful dental professionals who possess a high academic standard, respect ethical values, are accomplished, possess critical thinking, scientific understanding, well-developed self-confidence and tolerance, and are devoted to their professional duties.

Our students who choose to matriculate in our Faculty rightfully carry the pride of being within an environment where they will absorb the universal values of Near East University. I congratulate all of them on behalf of the Faculty and extend my best wishes for their well-being and success.

Prof. Dr. M. Mutahhar Ulusoy

About Our Faculty

The Near East University Faculty of Dentistry was established as the first faculty of dentistry in the Turkish Republic of Northern Cyprus (TRNC), commencing its Turkish language program education on October 1, 2007, under a protocol agreement with Ankara University Faculty of Dentistry. The Faculty rapidly achieved a respected standing by prioritizing quality and innovation in education through its robust academic staff. In 2014, it secured approval for its English program and initiated instruction in the English language; both programs continue to operate today. Possessing a structure that has continuously evolved and been updated since its foundation, the Faculty remains committed to a pioneering role in the field of dentistry as a recognized educational institution on both national and international platforms.

Adopting the Near East University's overarching philosophy of providing education aligned with international standards, the Faculty aims to offer its students a well-equipped education by utilizing the latest technologies in modern dental instruction. Targeting the graduation of dental professionals who are internationally recognized, adhere to ethical values, possess a scientific foundation, and serve both the community and the profession, the Faculty has consistently strengthened its academic staff and infrastructure since its inception. Our specialized and experienced teaching faculty ensures that students gain a comprehensive educational experience by offering them opportunities to translate theoretical knowledge into practical application. Furthermore, the Faculty facilitates the development of students' professional competencies by providing modern and well-appointed clinical internship opportunities to enhance their clinical skills.

In line with the Near East University's Quality Policy principle of "Producing Qualified Knowledge," the Faculty places significant emphasis and priority on research and development activities, thus committing to the production of high-quality publications in the field of dentistry. In this context, the Faculty contributes to the advancement of the discipline by offering opportunities for its academics to conduct research and further their professional development.

Our six-story building, located within the university campus and comprising educational and clinical committees, is outfitted with contemporary tools and equipment. The facility includes pre-clinical simulation laboratories, a primary diagnostic center utilizing up-to-date imaging techniques, a computer-aided 3D modeling laboratory, a sedation unit, fully-equipped clinics, operating theatres dedicated to surgical disciplines, and various lecture and meeting rooms.

The clinical services of the Near East University Dental Hospital have been accredited by the Joint Commission International (JCI), an accreditation commission granted to institutions

demonstrating excellence accepted at the international level. By establishing agreements with numerous insurance companies, trade unions, and associations—most notably the Social Security Institution of the Republic of Turkey (SGK) and Near East Life health insurance for Near East Organization employees—the clinics offer high-quality healthcare services under favorable conditions to a broad patient base.

About Our University

Since 1988, Near East University has been a significant center in education, science, and culture, distinguished by a deeply rooted educational tradition and an international identity. With world-class infrastructural facilities and a highly competent academic staff, we have adopted the principle of cultivating our students to be self-confident, ethically responsible, rational, creative, innovative, and free-thinking individuals.

As one of the most prominent scientific and cultural hubs of the Mediterranean, Near East University consistently affirms its quality of education through its global achievements:

Our Leading Position in International Rankings

Near East University is continuously ranked highly by independent international rating organizations:

- THE (Times Higher Education) World University Rankings 2026: While retaining the title of the "best university" in the Turkish Republic of Northern Cyprus (TRNC), we are placed within the 601–800 band globally. Furthermore, we have solidified our position among the top three foundation universities and the top five universities overall in Turkey.
- US News & World Report "Best Global Universities 2024–2025": We have strengthened our global visibility by ranking 689th worldwide, 7th in Turkey, and 1st in the TRNC.

Impact and Subject-Specific Successes

As a research-focused institution that values societal contribution, we prove our academic expertise across various fields:

- THE Impact Rankings 2025: Our work towards the United Nations Sustainable Development Goals (SDGs) is particularly noteworthy:
 - Overall Ranking: 43rd globally
 - Quality Education (SDG 4): 13th
 - Sustainable Cities and Communities (SDG 11): 15th

- Partnerships for the Goals (SDG 17): 35th
- Good Health and Well-being (SDG 3): 48th
- THE Subject Rankings: We are among the leading universities in key fields such as Physical Sciences, Computer Science, Engineering, and Education. Notably, in Physics and Computer Science, we share the title of the "best Turkish university" in both Turkey and the TRNC.
- Shanghai Ranking (2024 Subject-Specific): We have been recognized among Turkey's foremost institutions, ranking in the top 400 universities globally for Physics and within the 401–500 band for Mathematics.

A Strong Identity Among Young Universities

- THE Young University Rankings 2024: Ranking 139th globally among universities aged 50 and under, we have internationally validated our young, dynamic, and research-intensive structure.

These achievements unequivocally demonstrate the quality and international validity of the education Near East University will offer you. You are at the right address to become a competent practitioner equipped with a global vision.

The Faculty's Mission, Vision, and Core Values

Mission

- Contributing to the science of dentistry at national and international standards through research and development activities
- To provide modern and quality health services for the oral and dental health of the society
- To raise graduates who act with the awareness of professionalism, respect ethical values, are sensitive to the health needs of society, prioritize human values, are competent in their professional practices, and adopt the principle of lifelong learning.

Vision

- To maintain its position among the institutions leading the development of the profession with its high education quality and intensive research and development activities.
- Maintaining its position among institutions that use advanced technology, and providing modern and quality service to achieve excellence in terms of patient satisfaction.

Core Values

- Honest and impartial
- Professional
- Adhered to ethical principles
- Sensitive to society
- Oriented to contemporary service
- Respectful for patient and employee rights
- Productive and scientific

Aims and Goals of the Faculty

Aims and Goals Encompassing the Field of Education

Aim 1: To train contemporary dentists and scientists who prioritize human values, communicate effectively, are respectful of ethical values, perform critical thinking, are responsible, work for the protection of the oral and dental health of the society and the treatment of diseases, are competent in professional practices, use his/her knowledge and skills to approach diseases and problems in a solution-oriented manner, adopt the principle of lifelong learning and are prone to teamwork.

Goal 1.1: To maintain the currency of the educational curriculum in light of the National Core Curriculum for Pre-Graduate Dentistry Education (DUÇEP) and the Turkish Higher Education Qualifications Framework (TYYÇ).

Goal 1.2: To structure the educational curriculum in a manner that encourages the cultivation of dental professionals who are inquisitive, critical-thinking, open to lifelong learning, and meticulous regarding ethical and deontological principles.

Goal 1.3: To integrate practices such as leadership, teamwork, research promotion, effective communication, and risk management into the educational curriculum.

Goal 1.4: To ensure the provision of high-quality undergraduate and postgraduate education from both the perspective of clinical intervention and theoretical grounding.

Goal 1.5: To ensure that students in both undergraduate and postgraduate programs can undertake a sufficient volume of clinical applications to acquire competencies in the cognitive, affective, and psychomotor domains, and to establish laboratory and clinical application sites equipped with advanced technologies for these purposes.

Goal 1.6: To facilitate the formation of student societies, the establishment of student clubs, and the support of activities undertaken by these clubs for social, cultural, and scientific engagement.

Goal 1.7: To ensure diversity in assessment tools by utilizing both conventional and complementary evaluation instruments in measurement and assessment.

Goal 1.8: To ensure the continuity of mentorship and coordination systems that allow students to receive support throughout their education.

Goal 1.9: To support the participation of the Faculty's academic staff in scientific activities aimed at ensuring quality and standardization in education.

Goal 1.10: To increase the integration of active learning methodologies within the educational curriculum and to adopt a student-centered pedagogical approach.

Aims and Goals Encompassing the Field of Research

AIM 2: To produce universal, quality, valid, and reliable information by conducting scientific studies for the development of health services.

Goal 2.1: To stimulate the scientific activities of the academic staff and ensure the necessary motivation is provided.

Goal 2.2: To create environments conducive to the development of the academic staff's research capabilities.

Goal 2.3: To encourage the participation of academic staff in scientific meetings organized at both national and international levels.

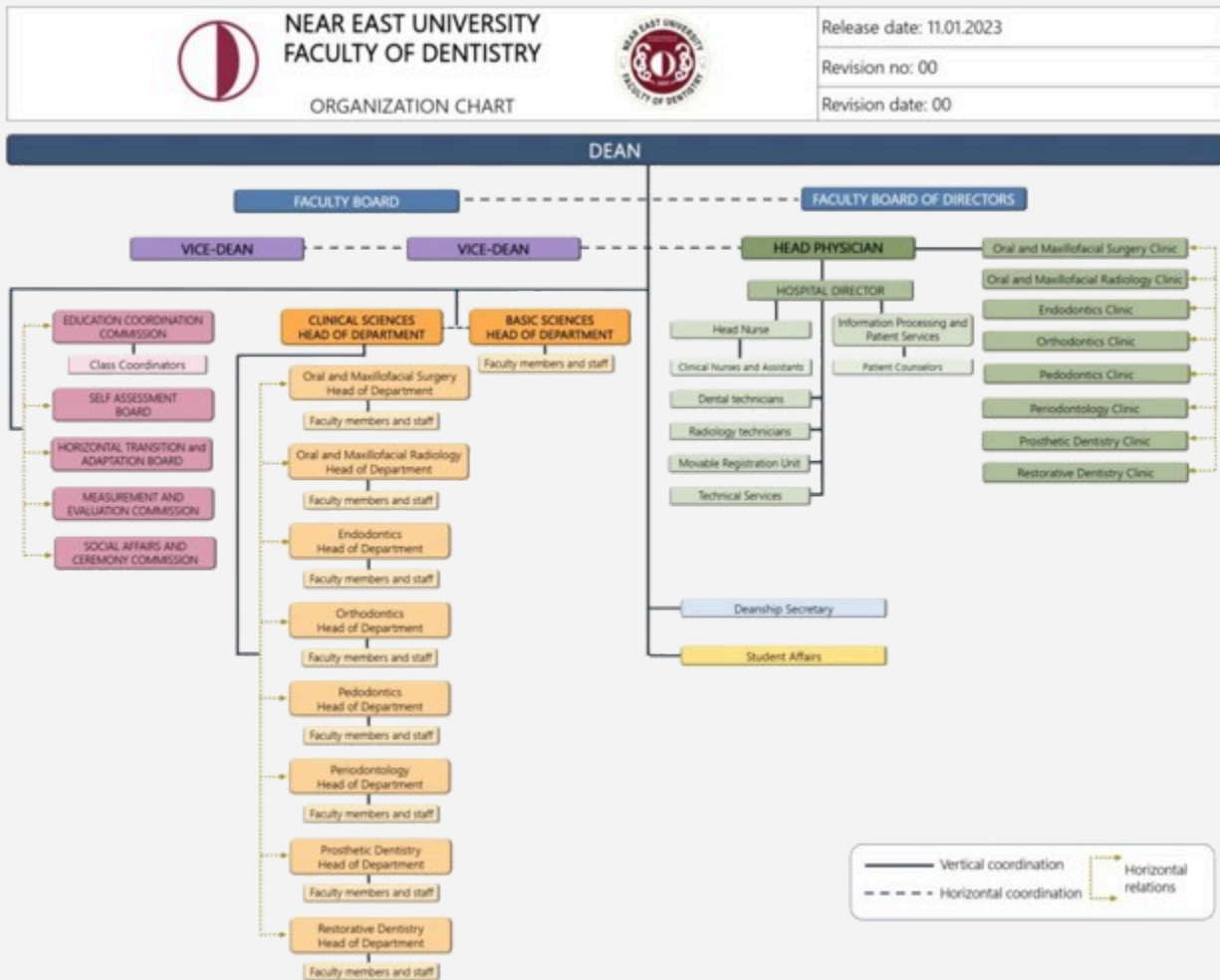
Aims and Goals Encompassing Oral and Dental Health Services

AIM 3: To protect the oral and dental health of society and to provide quality health services by using up-to-date diagnosis and treatment methods in the light of scientific knowledge and observing patient rights.

Goal 3.1: To establish the necessary educational environments for the operationalization of quality processes in healthcare and to ensure the continuity of these processes.

Goal 3.2: To deliver high-quality healthcare services that prioritize community needs, integrate technological advancements into dental practices, and are subject to continuous updating.

Administrative Organizational Chart



Why a Faculty of Dentistry?

Dentistry is not merely a profession; it is a sacred art that directly impacts health and quality of life. At the Near East University Faculty of Dentistry, our objective is to cultivate highly competent practitioners who will execute this art at the highest level, adhere to ethical values, and meet international standards. Below are the key reasons that make our Faculty unique:

1. Deep-Rooted Experience and Strategic Location

- **The Responsibility of Being Cyprus's First and Only Faculty:** Since 2007, as the inaugural Faculty of Dentistry in Cyprus, we operate with the experience and responsibility inherent in being the leading educational and healthcare institution in the region.
- **Bilingual Education Opportunity:** We offer our students the opportunity to pursue education in both Turkish and English, thus paving the way for them to become practitioners who can follow international literature and possess global career aspirations.

2. State-of-the-Art Equipment and Clinical Facilities

- **Integrated Clinic and Fully-Equipped Laboratories:** While our students receive their pre-clinical training in simulation laboratories outfitted with contemporary technologies, they gain direct, hands-on experience with real patients under the supervision of seasoned academics in our integrated clinics, which serve an increasing patient capacity.
- **Digital Dentistry:** Our laboratories, equipped with modern tools such as CAD/CAM technologies, digital radiography devices, and 3D printers, offer students the opportunity to learn the most current applications of digital dentistry. This ensures that our graduates are well-versed in the future of the profession upon graduation.

3. Expert and Dynamic Academic Staff

- **Competent Instructors in Their Fields:** Our students receive instruction from a dynamic academic staff specialized in their respective areas, who are responsible for national and international scientific publications. Our instructors do more than simply transfer knowledge; they also provide mentorship to support students' professional and ethical development.

4. Comprehensive and Application-Oriented Education

- **Balanced Transition from Theory to Clinic:** The first three years focus on basic medical and dental sciences, while the theoretical knowledge acquired is reinforced by advanced clinical applications in the final two years.
- **Intensive Clinical Experience:** Internships are supported by the growing patient portfolio of the faculty hospital, which is covered by the Social Security Institution (SGK). This exposure allows our students to encounter a wide variety of cases and gain comprehensive clinical experience prior to graduation.

5. Campus Life and Development Opportunities

- **Social and Scientific Campus Life:** You can fully experience university life in a campus environment enriched by student clubs, scientific events, and social activities.

By choosing the Near East University Faculty of Dentistry, you gain the privilege of joining the ranks of successful future dental professionals, receiving international-standard, practice-oriented education in well-equipped facilities, accompanied by an expert academic staff.

Faculty Contact Information

- **Faculty Address:** Near East University, Faculty of Dentistry, Near East Boulevard, P.O. Box: 99138, Nicosia / TRNC (Turkish Republic of Northern Cyprus)
- **Faculty Website:** <https://dentistry.neu.edu.tr/>
- **Faculty Dean's Office**
 - Phone: +90 392 680 20 30 / Extension: 2677
 - E-mail: dishekimligi.dekanlik@neu.edu.tr
- **Student Affairs**
 - E-mail: disecza.ogrenciisleri@neu.edu.tr
 - E-mail: iso.registration@neu.edu.tr
 - Fax: +90 392 680 20 25

Executive Management

Prof. Dr. M. Mutahhar Ulusoy	<ul style="list-style-type: none">● Dean of the Faculty of Dentistry● Head of the Department of Clinical Sciences● Head of the Department of Prosthetic Dentistry
Prof. Dr. Sevcan Kurtulmuş Yılmaz	<ul style="list-style-type: none">● Vice Dean of the Faculty of Dentistry
Assoc. Prof. Dr. Özey Önöral	<ul style="list-style-type: none">● Vice Dean of the Faculty of Dentistry● Head of the Department of Pediatric Dentistry

Prof. Dr. Nuran Ulusoy	• Head of the Department of Restorative Dentistry
Prof. Dr. Güney Yılmaz	• Head of the Department of Periodontology
Assoc. Prof. Dr. Fatma Basmacı	• Head of the Department of Endodontics
Prof. Dr. Seçil Aksoy	• Head of the Department of Oral and Maxillofacial Radiology
Prof. Dr. Ahmet Özer Şehirli	• Head of the Department of Basic Sciences
Assoc. Prof. Dr. Lokman Onur Uyanık	• Chief Physician of the Dental Hospital • Head of the Department of Oral and Maxillofacial Surgery
Assist. Prof. Dr. Beste Kamiloğlu	• Head of the Department of Orthodontics

Academic Staff

The Clinical Sciences Department of the Near East University Faculty of Dentistry comprises eight specialized departments (*Anabilim Dalları*): Oral and Maxillofacial Surgery, Oral and Maxillofacial Radiology, Endodontics, Orthodontics, Pedodontics, Periodontology, Prosthetic Dentistry, and Restorative Dentistry. The Department of Basic Medical Sciences includes faculty members from the scientific disciplines of Anatomy, Biochemistry, Pharmacology, Physiology, Histology, and Microbiology. The Faculty is distinguished by its extensive and highly qualified academic staff. This cohort ensures the effective execution of undergraduate and postgraduate education, alongside research and clinical services.

The Faculty continually strengthens and develops its academic personnel. Various training and development programs are organized to enhance the qualifications of the academic staff, thereby constantly improving the quality of the Faculty's education and research. This dynamic structure ensures that the Faculty remains an internationally and nationally recognized center for education and research.

Program Duration

The dentistry education program spans five years and is conducted on a full-time basis. The academic year consists of two terms—Fall and Spring—totaling 28 weeks. In the first three years, courses in basic medical and clinical sciences are augmented with preclinical applications. In the final two years, clinical instruction is provided alongside a less intensive theoretical curriculum.

Mode of Instruction

Formal instruction is utilized at our Faculty. Courses may be delivered in face-to-face, online, or hybrid modalities. However, all measurement and assessment procedures are conducted in person.

Program Model

Our Faculty implements the integrated curriculum model (multidisciplinary integration - Harden's Integration Ladder - Step 9). The integrated curriculum offers students a more holistic learning experience through interdisciplinary collaboration and the systematic integration of subject matter. This approach provides students with the opportunity to explore interdisciplinary connections while simultaneously ensuring a learning environment that encompasses a wide spectrum of subjects, ranging from basic medical sciences to clinical applications. This methodology facilitates the students' ability to link theoretical knowledge with practical application and address complex clinical scenarios, thereby aiding the development of their clinical competencies in areas such as patient assessment and treatment planning. The integrated curriculum offers students a more comprehensive understanding of dental practice from an interdisciplinary perspective, significantly contributing to their development as more competent, reliable, and effective healthcare professionals in their future clinical careers.

Level of Study

Dental education encompasses a five-year program, equivalent to a master's degree, comprising 300 ECTS credits. The program confers qualifications at the "First Cycle" as defined within the European Qualifications Framework for Higher Education (QF-EHEA) and the Level 6 qualifications determined under the Turkish Higher Education Qualifications Framework (TYYÇ), in line with ISCED 2011. Within this framework, the program is specifically designed to satisfy both the ECTS credit requirements and the requisite level qualifications.

Program Competencies

PC 1. Graduates must be competent in the application of basic medical sciences, clinical sciences, and social sciences knowledge in the delivery of patient care throughout his/her professional life.

PC 2. Graduates must be competent in patient examination, evaluation of the signs-symptoms-causes of oral diseases, differential diagnosis, and comprehensive treatment planning by using his/her knowledge of the normal structure, functions, and interactions of the human body, especially the oral cavity, at the level of cells, tissues, organs, and systems.

PC 3. Graduates must be competent in relating the patients' systemic conditions with the mouth and surrounding tissues; evaluating laboratory tests and drug interactions, and taking necessary precautions.

PC 4. Graduates must have knowledge of materials, instruments, devices, and their uses in the field of dentistry and must use them effectively.

PC 5. Graduates must act in accordance with the legal responsibilities and ethical principles of the dental profession.

PC 6. Graduates must carry out the treatment process of diseases and anomalies related to the mouth and surrounding tissues, within his/her competence, individually and/or in cooperation with different disciplines, by using the knowledge and skills he/she has acquired in the field of dentistry.

PC 7. Graduates must have knowledge of individual and societal risk factors associated with oral and dental diseases; contribute to the prevention and reduction of diseases with preventive and preventive practices; support the state of health at different stages of life by participating in community oral and dental health programs and projects.

PC 8. Graduates must provide ergonomic and safe working environments for himself/herself and other healthcare professionals by complying with quality management and processes, infection control methods, radiation safety, and medical waste regulation.

PC 9. Graduates must establish effective communication based on trust and respect with the patient, patient relatives, colleagues, other health personnel, and the society regardless of language, religion, race, gender, socio-cultural, and economic status.

PC 10. Graduates must be competent in keeping and protecting patient records, taking into account the confidentiality of patient information, obtaining informed consent, and observing patient rights.

PC 11. Adopting the importance of lifelong learning, graduates must be competent in following up-to-date and evidence-based scientific data, academic activities, and biomedical innovations by using a foreign language, information communication technologies, library, and other databases to continuously improve himself/herself. Graduates must question the validity and accuracy of information with a critical thinking approach.

PC 12. Graduates must be competent in organizing teamwork in his/her field, examining and evaluating the activities and developments of the employees under his/her responsibility by leading.

PC 13. Graduates must examine current events with the awareness of social responsibility by associating them with his/her field; show sensitivity; organize and implement projects and activities in cooperation with other professional groups.

Registration and Admission Requirements

All applications pertaining to admission and registration at Near East University must be submitted to the University's Directorate of Student Registration and Admissions. Application deadlines are announced by the University. Students who are citizens of the Republic of Turkey (T.C.) may register based on their results from the annual Higher Education Entrance Examinations; meanwhile, citizens of the Turkish Republic of Northern Cyprus (KKTC) and

international students may register following specialized examinations administered by the University. Candidates who are granted the right to register must complete the following specified documents and formalize their registration within the designated registration period.

Required Documents for Registration:

- Higher Education Entrance Examination result certificate.
- Original high school diploma or a recently dated certificate of graduation.
- Photocopy of the National Identity Card.
- Certificate of residency (ikametgâh belgesi).
- Military status certificate (where applicable).
- 12 passport-sized photographs.
- Other documents determined prior to registration and announced by the university.

The following conditions are required for admission to the Near East University Faculty of Dentistry:

- To be a graduate of a high school or an equivalent vocational high school (diplomas obtained from foreign high schools must be validated by the Ministry of National Education).
- To have gained the right to register to the Near East University Faculty of Dentistry for that academic year as a result of the Higher Education Entrance Examinations.
- To have gained the right to register to the Near East University Faculty of Dentistry for that academic year as a result of the examination organized by the University.

Recognition and Evaluation of Prior Learning

Full-time students at Near East University may be granted exemption from certain courses within the framework of the NEU Regulation on Exemption and Equivalence. If the content of a course previously taken at another higher education institution is deemed equivalent to a course offered at NEU, the student may be exempted from that course following an evaluation by the Faculty of Dentistry's Lateral Transfer and Equivalence Commission and subsequent approval by the Faculty Administrative Board.

Lateral Transfer Conditions

A student seeking lateral transfer to the Near East University Faculty of Dentistry is evaluated based on their transcript and language proficiency. If deemed suitable, their equivalence to the relevant class is carried out by the Faculty's Lateral Transfer and Equivalence Commission, based on the principles set forth in the "Regulation on the Principles of Transfer Between Associate and Undergraduate Degree Programs, Double Major, Minor, and Credit Transfer

Between Institutions in Higher Education Institutions" and the "Near East University Regulation on Lateral Transfer." Only full-time students are accepted.

Graduation Requirements

Students are entitled to graduate upon fulfilling the conditions specified in the Faculty of Dentistry's Student Registration, Education-Instruction, and Examination Directive, as well as meeting the obligations required by the education and instruction programs. Any student who completes 300 ECTS credits, including compulsory, common compulsory, and elective courses, maintains a Cumulative Grade Point Average (CGPA) above 2.00, and has no letter grade of 'FF' is eligible for graduation.

Degree Awarded

The diploma conferred by the Near East University Faculty of Dentistry is a Master's degree in Dentistry, following a five-year period of education and instruction. Graduates are granted the professional title of "Dentist".

Professional Profile of Graduates

Individuals who graduate with the title of Dentist can seek employment in state-affiliated healthcare institutions, hospitals, and/or work in private practice settings as independent practitioners. As graduates possess a master's-level degree, they are eligible to apply to various doctoral programs at universities or to specialization training programs to become a specialist in a field, typically through the "Dental Specialization Examination (DUS - Diş Hekimliği Uzmanlık Sınavı)." The specific entry requirements for doctoral and specialization training vary by country.

Program Structure

The Faculty's curriculum may include compulsory theoretical course committees, compulsory practical course committees, non-committee elective courses, non-committee common compulsory courses, as well as theoretical courses, seminars, internships, practical applications, pre-clinical activities, clinical practices, laboratory work, and other activities (such as reviews, assignments, individual study, exam preparation, field and library studies, graduation thesis, projects, etc.).

Theoretical committees consist of clinical science committees, basic medical science committees, and clinical medical science committees. The preclinical practical committee incorporates applications related to the disciplines of Dental Morphology and Manipulation, Prosthetic Dentistry, Restorative Dentistry, Endodontics, Pedodontics, Periodontology, Oral and

Maxillofacial Surgery (Dental Anesthesia), and Oral and Maxillofacial Radiology. Additionally, practical applications related to basic medical courses are also included.

Non-committee elective courses are opened and/or closed upon the recommendation of the Faculty's Educational Coordination Commission and the University's Common Courses Coordinator. The common compulsory courses for T.C., KKTC, and international students are "Atatürk's Principles and History of Reforms," "Turkish Language," and "English." In accordance with the decision of the Council of Higher Education, Turkish Language is delivered as 4 credits/2 semesters, Atatürk's Principles and History of Reforms as 4 credits/2 semesters, and English as 6 credits/2 semesters. Furthermore, "Career Planning" (2 credits/1 semester) and "Campus Orientation" (2 credits/1 semester) are included among the first-year courses.

Course List

The Near East University Dentistry Program has been designed in compliance with the requirements of the modern era, aiming for students to graduate as competent individuals in the field of dentistry, both theoretically and practically. With its rich curriculum content and student-centered approach, the program also aids in the development of students' skills in areas such as critical thinking, problem-solving, and effective communication.

The educational program at our Faculty spans a total of five years, encompassing ten semesters. Our curriculum, which is designed to ensure students acquire both fundamental and professional competencies and skills, includes courses in clinical dental sciences such as Oral and Maxillofacial Surgery, Oral and Maxillofacial Radiology, Endodontics, Orthodontics, Pedodontics, Periodontology, Prosthetic Dentistry, and Restorative Dentistry. Additionally, courses in basic medical sciences and clinical medical sciences are integrated into the curriculum. Common compulsory courses administered by our University's Common Courses Coordination Office, out-of-field elective courses organized by our University's Elective Courses Coordination Office, and in-field elective courses organized by our Faculty allow our students to fully complete their professional competencies. In the first three years of our program, theoretical instruction is provided alongside preclinical practical courses designed to acquire manipulation skills; the final two years feature theoretical courses focused on professional knowledge, in conjunction with clinical applications. The year-by-year distribution of courses, committees, and internships, as well as prerequisite courses, are presented in the accompanying tables, and course contents are detailed in the course syllabi.

Year 1

YEAR 1							
CODE	COURSE NAME	Pre	C/E	T	P	ECTS	Field
DTC100	1st Year Theoretical committees	-	C	362	0	26	Basic Dental and Medical Sciences
	CS1 – Introduction to Dentistry	-		44	0	3	Basic Dental Sciences
	CS2 - Dental Anatomy and Morphology	-		16	0	2	
	CS3 – Dental Tissues and Materials Science	-		23	0	2	
	BMS1 – Cellular Basis of Life	-		64	6	4	Basic Medical Sciences
	BMS2 – Tissue and Embryology	-		67	6	5	
	BMS3 – Cardiovascular System and Respiratory System	-		46	3	4	
	BMS4 – Gastrointestinal System and Metabolism	-		57	6	4	
	BMS5 – Urogenital System and Endocrine System	-		45	9	3	
DPC100	Year 1 Practical Committee	-	C	0	80	10	Basic Dental Sciences
YİT100	Turkish Language	-	C	4	0	4	Competency Completion
AİT200	Atatürk's Principles and History of Reforms	-	C	4	0	4	
ENG100	English Language	-	C	6	0	6	
CAR100	Career Planning	-	C	14	0	2	
CAM100	Campus Orientation	-	C	14	0	2	
ITE100	Information Technologies in Dentistry	-	C	2*15	0	2	
CHC100	Cyprus History & Culture (Elective Course I)	-	CE	2*15	0	2	
SEC351	21st Century Skills	-	C	2*15	0	2	
Total				449	110	60	
C: Compulsory – E: Elective – CE: Compulsory Elective – T: Theoretical Course Hours – P: Practical Course Hours – ECTS: European Credit Transfer System							

The courses situated within the eight distinct committees of the Year 1 Theoretical committees encompass the fundamental theoretical knowledge in the fields of dentistry and basic medical sciences. The instruction within these committees is delivered using a multidisciplinary approach following a specific sequence. The **"Introduction to Dentistry"** committee introduces the academic departments and application domains within dentistry; explains the profession's history and core principles to the students; covers approaches to first aid and emergency treatment; and aims to foster an understanding of individual and social behavior by defining key concepts in behavioral sciences and psychology. The **"Dental Anatomy and Morphology"** committee details the numbering systems for teeth and the anatomical structure of permanent and deciduous dentition. The **"Dental Tissues and Materials Science"** committee explains the

development, histology, and physiology of teeth and surrounding tissues, while simultaneously covering the physical and mechanical properties of dental materials.

Basic medical science courses occupy a significant and extensive portion of the Year 1 curriculum. The **"Cellular Basis of Life"** committee covers cellular structure and functions, biochemical processes, and genetic information transfer. The **"Tissues and Embryology"** committee covers the structure of human tissues and the process of embryological development, while the **"Cardiovascular System and Respiratory System"** committee explains the anatomy, histology, and physiology of the cardiovascular and respiratory systems. The **"Gastrointestinal System and Metabolism"** committee examines the digestive system and metabolic processes, and the **"Urogenital System and Endocrine System"** committee addresses the reproductive organs and hormonal systems.

The **Year 1 Practical committee** aims to develop students' three-dimensional thinking, cognitive, and psychomotor skills while teaching the morphological characteristics of permanent teeth and the manipulation of various dental materials.

Beyond the common compulsory courses mandated by YÖK (Council of Higher Education)—Turkish Language, Atatürk's Principles and History of Reforms, and English—the first-year curriculum includes the **Career Planning** course, which introduces various sectors in the business world and raises awareness about their expectations, and the **Campus Orientation** course, designed to facilitate student adaptation to the academic and social life of the university. The **Information Technologies in Dentistry** course defines fundamental concepts related to modern computer technologies and explains the integration of information technology into dentistry. The elective course, **Cyprus History & Culture**, is offered to all university students in their first semester and helps them become acquainted with the cultural and historical richness of the region they live in.

In the Year 1 curriculum, students also take one out-of-field elective course selected from the elective course pool based on their interests.

Year 2

YEAR 2							
CODE	COURSE NAME	Pre	C/E	T	P	ECTS	Field
DTC200	Year 2 Theoretical Committees	DTC100 DPC100	C	238	0	24	Basic Dental and Medical Sciences
	CS1 - Dental Tissue Diseases and Treatments I			46	0	4	Basic Dental Sciences
	CS2 – Fixed Prosthetic Restorations			32	0	3	
	CS3 - Dental Tissue Diseases and Treatments II			17	0	2	
	CS4 – Dental Tissue Diseases and Treatments III			19	0	2	
	BMS1 – Fundamentals of Diseases I			40	24	5	Basic Medical Sciences
	BMS2 – Central Nervous System			42	8	4	
	BMS3 – Fundamentals of Diseases II			42	0	4	
DPC200	Year 2 Practical Committees	DTC100 DPC100	C	0	372	20	Clinical Dental Sciences
	PC1 – Restorative Dentistry			0	120	6	
	PC2 - Endodontics			0	120	7	
	PC3 – Oral and Maxillofacial Radiology			0	12	1	
	PC4 – Prosthetic Dentistry			0	120	6	
DCS200	Communication Skills in Dentistry		C	14	0	2	Competency Completion
GEC***	Elective Course I	-	E	2*15	0	4	
GEC***	Elective Course II	-	E	2*15	0	4	
GEC***	Elective Course III	-	E	2*15	0	4	
GEC***	Elective Course IV	-	E	1*15	0	2	
Total				595	776	60	
C: Compulsory – E: Elective – CE: Compulsory Elective – T: Theoretical Course Hours – P: Practical Course Hours – ECTS: European Credit Transfer System							

Within the Year 2 Theoretical committees, the field of dentistry occupies a more extensive scope compared to basic medical sciences. The courses within these committees are also delivered using a multidisciplinary approach following a specific sequence. The courses related to the **"Dental Tissue Diseases and Treatments I, II, and III"** committees define diseases of the teeth and surrounding tissues, explaining the methods for their diagnosis and treatment. The **"Fixed Prosthetic Restorations"** committee examines all clinical and laboratory stages of fixed prosthetic restorations, starting from treatment planning, and addresses restorative materials in detail. The basic medical science committees, **"Fundamentals of Diseases I and II,"** explain the structure of microorganisms, the cellular-level mechanisms of disease

development, and the local and systemic effects of pharmacological agents. The "**Central Nervous System**" committee covers the anatomical and histological structure and functions of the nervous system.

The **Year 2 Practical committees** consist of four sub-committees aimed at developing students' professional skills through practical applications conducted parallel to the clinical dentistry knowledge provided in the theoretical committees: The "Restorative Dentistry" practical sub-committee focuses on restorative cavity preparation and the application of base materials. In the "Endodontics" practical sub-committee, students perform endodontic access cavity preparation on anterior and posterior natural teeth, along with root canal preparation and obturation procedures on a single-rooted tooth. The "Oral and Maxillofacial Radiology" practical sub-committee provides hands-on instruction in intraoral periapical imaging techniques, while the "Prosthetic Dentistry" practical sub-committee involves applications related to the clinical and laboratory stages of fixed prosthetic restorations.

The **Communication Skills in Dentistry** course aims to develop competencies that will enable students to engage in effective communication in patient interactions and professional relationships.

In the Year 2 curriculum, students also take four out-of-field elective courses selected from the elective course pool based on their interests.

Year 3

YEAR 3							
CODE	COURSE NAME	Pre	C/E	T	P	ECTS	Field
DTC300	Year 3 Theoretical Committees	DTC200 DPC200	C	198	0	18	Clinical Dental Sciences
	CS1 - Examination			30	0	4	
	CS2 - Removable Dentures			36	0	4	
	CS3 - Periodontal Treatment			23	0	2	
	CS4 - Dental Tissue Diseases and Treatments IV			18	0	1	
	CS5 - Oral and Maxillofacial Surgery and Local Anesthesia			27	0	2	
	CS6 - Dental Tissue Diseases and Treatments V			23	0	2	
	CS7 - Systemic Diseases			23	0	2	
	CS8 - Orthodontic Approaches			18	0	1	
DPC300	Year 3 Practical Committees	DTC200 DPC200	C	0	484	34	
	PC1 - Restorative Dentistry Pre-clinic			0	112	8	
	PC2 - Prosthetic Dentistry Pre-clinic			0	112	8	
	PC3 - Endodontics			0	108	8	
	SPC1 - Restorative Dentistry Simulation			0	44	2	
	SPC2 - Prosthetic Dentistry Simulation			0	32	2	
	SPC3 - Orthodontics Simulation			0	4	1	
	SPC4 - Anesthesia			0	12	1	
	SPC5 - Periodontology Simulation			0	4	1	
	SPC6 - Pediatric Dentistry Simulation			0	56	3	
DCS300	Clinical and Diagnostic Skills		C	1	4	4	Clinical Dental and Medical Sciences
GEC***	Elective Course	-	E	2*15	0	4	Competency Completion
Total				226	488	60	
C: Compulsory – E: Elective – CE: Compulsory Elective – T: Theoretical Course Hours – P: Practical Course Hours – ECTS: European Credit Transfer System							

In the 3rd Year Theoretical committees, knowledge specific to clinical dentistry is provided across nine distinct course committees using a multidisciplinary approach. The **"Examination"** committee explains the processes of diagnosis and treatment planning in adult and pediatric patients, the systemic diseases that influence these processes, and the corresponding dental approaches. The **"Removable Dentures"** committee encompasses all clinical and laboratory stages of complete and partial dentures, starting from planning. The **"Periodontal Treatment"** committee covers the diagnosis, risk assessment, treatment, and prognosis of periodontal

diseases. In the **"Dental Tissue Diseases and Treatments IV and V"** committees, endodontic treatment methodologies and restorative options for cases involving tooth substance loss are examined. The **"Oral and Maxillofacial Surgery and Local Anesthesia"** committee explains the fundamental principles of minor surgical procedures and infection control, addresses local anesthetic agents used in dentistry, various techniques, and anesthesia-related complications. The **"Systemic Diseases"** committee focuses on the dental approach for adult and pediatric patients with systemic diseases, along with the factors to be considered during treatment procedures and drug administration. The **"Orthodontic Approaches"** committee covers the relationship between orthodontics and growth-development, skeletal and dental anomalies, and malocclusions.

The **Year 3 Practical committees** comprise practical sub-committees that serve as a continuation of the 2nd Year Practical committees, in addition to six different simulation sub-committees. In the "Restorative Dentistry" practical sub-committee, composite resin restorations are applied in the preclinical laboratory, and cavity preparation and restorations are simulated on phantom models. In the "Prosthetic Dentistry" practical sub-committee, the laboratory stages of complete and partial dentures are performed, while the preparation stage for fixed prosthetic restorations is simulated on phantom models in the simulation sub-committee. In the "Endodontics" practical sub-committee, all endodontic treatment procedures, ranging from access cavity creation to root canal filling, are simulated on phantom models; moreover, endodontic retreatment procedures are applied on extracted natural teeth. The "Orthodontics" simulation sub-committee involves the fabrication of removable appliances. In the "Anesthesia" simulation sub-committee, students practice maxillary and mandibular anesthesia techniques on one another. In the "Periodontology" simulation sub-committee, scaling and root planing procedures (*detertraj*) are performed on phantom models, simulating the operator-patient position. In the "Pedodontics" simulation sub-committee, age-appropriate toothbrushing instruction is provided, preventive applications are performed, and compomer restorations and pulpotomy procedures are applied on deciduous teeth in phantom models.

The **Clinical and Diagnostic Skills** course aims to impart practical competencies related to diagnostic and treatment processes. Within this course, students learn to measure vital signs such as blood glucose using a glucometer, blood pressure, and temperature. Furthermore, they receive training on procedures such as establishing venous access and performing intravenous and intramuscular injections. Topics such as ensuring scene safety, checking consciousness, evaluating the airway and applying appropriate maneuvers, controlling respiration and pulse, and correctly performing cardiopulmonary resuscitation and respiratory support are taught. Alongside the theoretical knowledge provided to distinguish and correctly intervene in

emergencies that may be encountered during dental procedures, students work on models and participate in simulation training where they perform practical applications on each other. This provides students with the opportunity to apply their theoretical knowledge in a practical setting.

In the Year 3 curriculum, students also take one out-of-field elective course selected from the elective course pool based on their interests.

Year 4

YEAR 4							
CODE	COURSE NAME	Pre	C/E	T	P	ECTS	Field
DTB400	Year 4 Practical Committees	DTC300 DPC300 DCS300	C	232	0	16	Clinical Dental Sciences
	CS1 - Pediatric Dentistry and Orthodontics			35	0	2	
	CS2 - Color and Aesthetics			16	0	1	
	CS3 - Advanced Stages in Prosthetic Dentistry			16	0	1	
	CS4 - Orofacial Infections and Malignancies I			22	0	2	
	CS5 - Temporomandibular Joint, Trauma, and Pain			19	0	1	
	CS6 - Advanced Surgical Approaches			34	0	2	
	CS7 - Orofacial Infections and Malignancies II			45	0	4	
	MS - Biostatistics and Ethics			45	0	3	
Clinical Rotations	DCR401 - Oral and Maxillofacial Surgery	DTC300 DPC300 DCS300	C	0	60	4	Clinical Dental Sciences
	DCR402 - Oral and Maxillofacial Radiology			0	60	4	
	DCR403 - Endodontics			0	60	4	
	DCR404 - Orthodontics			0	30	2	
	DCR405 - Pediatric Dentistry			0	60	4	
	DCR406 - Periodontology			0	30	2	
	DCR407 - Prosthetic Dentistry			0	60	4	
	DCR408 - Restorative Dentistry			0	60	4	
EBD400	Evidence Based Dentistry	DTC300 DPC300 DCS300	C	11	8	4	Clinical Dental Sciences
COH400	Community Oral Health		C	16	48	4	Clinical Dental Sciences
DEC***	Elective Course	-	E	2*15	0	4	Competency Completion
DEC***	Elective Course	-	E	2*15	0	4	
Total				319	476	60	
C: Compulsory – E: Elective – CE: Compulsory Elective – T: Theoretical Course Hours – P: Practical Course Hours – ECTS: European Credit Transfer System							

The courses included in the 4th Year Theoretical committees encompass advanced-level knowledge pertinent to clinical dentistry. The **"Pediatric Dentistry and Orthodontics"** committee addresses issues and treatments encountered in pediatric patients during the primary and mixed dentition periods, as well as principles of various orthodontic treatments. The **"Color and Aesthetics"** committee focuses on multidisciplinary perspectives in the treatment planning of teeth requiring restoration for aesthetic needs. The **"Advanced Stages in Prosthetic Dentistry"** committee explains the planning, clinical, and laboratory stages of advanced prosthetic restorations. The **"Temporomandibular Joint, Trauma, and Pain"** committee covers temporomandibular joint disorders and their treatment modalities, approaches to trauma, and pain management. The **"Advanced Surgical Approaches"** committee examines diseases and treatments requiring complex surgical intervention, along with the relevant regional anatomy. The **"Orofacial Infections and Malignancies I and II"** committees investigate the anatomical structures of the head and neck region and pathways of infection spread, while explaining the diagnosis and treatment of odontogenic infections, tumors, and oral mucosal lesions. The **"Biostatistics and Ethics"** committee focuses on statistical methods utilized in scientific research and professional ethics.

The **Clinical Internships** in Oral and Maxillofacial Surgery, Oral and Maxillofacial Radiology, Endodontics, Orthodontics, Pediatric Dentistry (Pedodontics), Periodontology, Prosthetic Dentistry, and Restorative Dentistry aim to provide students with practical training in various dental disciplines and enhance their professional skills. Students are required to complete their clinical application training by rotating in groups through the clinic of each department, fulfilling specific duties over defined periods. Students undertake their internships exclusively within the faculty hospital. This arrangement enables the standardized evaluation of students' internship performance according to criteria established by the faculty.

The **Evidence-Based Dentistry** course aims to teach methods for searching scientific evidence and how to integrate this evidence into clinical decision-making processes in dental practice. It also instructs students on approaching clinical problems in a scientific and systematic manner. In this context, students are expected to reach evidence-based conclusions for a specific clinical problem.

The **Community Oral and Dental Health** course covers public health, epidemiology, and the planning and implementation of oral and dental health and preventive services targeting the community. Within this course, students design and present brochures for different age groups.

In the Year 4 curriculum, students also take two in-field elective courses selected from the elective course pool based on their interests.

Year 5

YEAR 5							
CODE	COURSE NAME	Pre	C/E	T	P	ECTS	Field
DTC500	Year 5 Theoretical Committees	DTC400	C	143	0	8	Clinical Dental and Medical Sciences
	CS1 - Current Approaches and Oral Implantology			25	0	1	Clinical Dental Sciences
	CS2 - Geriatrics and Maxillofacial Prosthetics			20	0	1	
	CS3 - Quality in Healthcare Services and Clinic Management			31	0	2	
	CMS1 - Clinical Medical Sciences I			28	0	2	Clinical Medical Sciences
	KTB2 - Clinical Medical Sciences II			39	0	2	
DAC500	Dentistry Adult Integrated Clinic	DTC400 DCR401 DCR402 DCR403 DCR404 DCR405 DCR406 DCR407 DCR408	C	0	528	28	Clinical Dental Sciences
DCC500	Pediatric Dentistry Integrated Clinic	DTC400 DCR401 DCR402 DCR403 DCR404 DCR405 DCR406 DCR407 DCR408		0	72	8	
RTP500	Research Techniques and Presentation	EBD400	C	11	8	4	Competency Completion
CSA500	Community Service Applications	COH400	C	16	48	4	Competency Completion
DEC***	Elective Course	-	E	2*15	0	4	Competency Completion
DEC***	Elective Course	-	E	2*15	0	4	
Total				230	616	60	
C: Compulsory – E: Elective – CE: Compulsory Elective – T: Theoretical Course Hours – P: Practical Course Hours – ECTS: European Credit Transfer System							

The courses within the 5th Year Theoretical committees, delivered multi-disciplinarily, cover contemporary treatment procedures and advanced knowledge pertaining to clinical dentistry and clinical medical sciences. The **"Current Approaches and Oral Implantology"** committee provides information on current devices and treatment methods utilized in dental practice, and

explains the imaging, planning stages, surgical procedures, and prosthetic restoration processes in Oral Implantology. The **"Geriatrics and Maxillofacial Prosthetics"** committee examines the physiological and pathological changes in geriatric patients and addresses the approach to these patient groups, while providing information on the prosthetic treatment procedures required due to the etiology of maxillofacial defects. The **"Quality in Healthcare Services and Clinic Management"** committee focuses on quality management, accreditation bodies, and standards in clinical services, and provides information on the establishment, administration, and legal regulations concerning clinics. Furthermore, it explains the importance of occupational health and safety and necessary precautions, while the **Health Law** sub-committee covers patient and practitioner rights and issues of malpractice. The **"Clinical Medical Sciences I and II"** committees explain the reciprocal relationship between various diseases and dental procedures, and detail the dental approach in the presence of these medical conditions.

Adult Integrated Clinic is a clinical internship course where anamnesis, examination, diagnosis, treatment planning, and treatment processes for adult patients are handled multidisciplinarily. Treatments related to the departments of Oral and Maxillofacial Surgery, Oral and Maxillofacial Radiology, Endodontics, Periodontology, Prosthetic Dentistry, and Restorative Dentistry are performed by a single student, following triage and a defined treatment plan. Patient reports regarding the diagnoses and treatments performed are prepared, with the additional goal of developing the student's documentation skills. **Pediatric Integrated Clinic** focuses on treatment procedures related to the departments of Pediatric Dentistry (Pedodontics) and Orthodontics. The objectives are to enhance students' clinical skills in communication with pediatric patients and parents, radiographic imaging, diagnosis, preventive applications, and restorative procedures; students are also expected to perform orthodontic model analysis and diagnose malocclusions. A case report is required upon the completion of clinical training.

Within the **Research Techniques and Presentation** course, types of scientific research, methods for searching medical databases, and presentation design and techniques are explained. Aimed at instilling the skill of collaborative teamwork, students work in groups to deliver a poster presentation and an oral presentation, experiencing how to present effectively in academic and professional settings. The **Community Service Applications** course aims to develop students' social responsibility consciousness by engaging them in projects that benefit the environment and community. Students identify current societal issues, prepare and execute a social responsibility project in collaboration with group members, and subsequently present their realized projects at the Student Workshop for Community Service Applications, held during the spring semester of each academic year.

In the Year 5 curriculum, students also take two in-field elective courses selected from the elective course pool based on their interests.

Elective Courses Pool

In the first three years of their education, our students select from out-of-field elective courses specifically opened for our Faculty by the University's Elective Courses Coordination Office, based on their interests; in the final two years, they choose from in-field elective courses offered by our Faculty. While the out-of-field elective courses provide our students with cultural depth and the opportunity to become acquainted with different disciplines, the in-field elective courses ensure they acquire advanced knowledge in areas of clinical dentistry and medical sciences that align with their interests. The elective course guide, which includes the list of elective courses offered for the respective academic year and their objectives, is shared with students on the Faculty's website at the beginning of each semester.

- [Appendix: Spring Semester Elective Courses 2023-2024](#)
- [Appendix: Fall Semester Elective Courses 2023-2024](#)
- [Appendix: Spring Semester Elective Courses 2022-2023](#)
- [Appendix: Fall Semester Elective Courses 2022-2023](#)
- [Appendix: Spring Semester Elective Courses 2021-2022](#)
- [Appendix: Fall Semester Elective Courses 2021-2022](#)

Examination Directives

Examinations are of ten types: committee-end examination, midterm examination, final examination, end-of-year general theoretical examination, practical committee examination, end-of-internship examination, make-up examination, excuse examination, exemption examination, and single-course examination. These examinations may be conducted in written, oral, or both written and oral, and/or practical formats.

Committee Examination: This is the name given to the examination, administered by the coordination office at the end of each completed committee, which encompasses all courses within that committee. The result of a student participating in this examination is referred to as the “committee result grade.” As the committee examination is a multidisciplinary assessment, it includes a number of questions and taxonomic levels specified in the blueprint tables. The examination may be oral, written, or practical. The weighted average of the committee-End Examinations influences the Theoretical Final Grade by 60%.

Midterm Examination: Subject to the provision that at least one midterm examination is administered for every common compulsory or elective course, the number, scope, format, and evaluation characteristics of the midterm examinations are determined by the Educational

Coordination Commission and the respective course instructor. Assignments, projects, and similar works completed within a course may be used in place of a midterm examination.

Final Examination for Common Compulsory and Elective Courses: This is the name given to the examination administered following the completion of each common compulsory or elective course. More than one final examination for a single course cannot be administered. Final examinations for courses given in a semester are administered at the end of that semester. The scope, format, and evaluation characteristics of the final examination are determined by the respective course instructor. The final examinations for a maximum of two courses scheduled within the same academic year may be conducted on the same day.

Theoretical Committees Final Examination: This is the name given to the general examination that includes questions from all committees provided during the academic year, and it is administered upon the completion of all committees. To be eligible to take the Theoretical committee Final Examination, the student must be active in the department and must have attended at least 70% of all committee courses. This examination includes questions weighted by the proportion of each committee and at the taxonomic levels specified in the blueprint tables. The examination may be oral or written. The Theoretical committee Final Examination includes questions from different disciplines (anabilim dalları). A student who fails this examination must take the make-up examination for it.

Practical Committees Final Examination: This is the practical examination for the courses included within the practical committee of the relevant academic year. To be eligible to take the Practical committee Examination, the student must be active in the department and must have attended at least 80% of the practical committee, and at least 60% of each course/sub-committee within the practical committee. The grade is calculated as the sum of 50% of the practical examination grades achieved during the year and 50% of the end-of-year practical examination grade, and is announced as a letter grade. For a student to successfully pass the practical committee, they must achieve a minimum of 50% success in the practical sub-committee of each discipline. Otherwise, the student must take the make-up examination for the respective discipline's practical committee. If unsuccessful, the student must retake the entire practical committee.

End-of-Internship Examination: For 4th and 5th-year students, a theoretical and/or practical examination is administered at the end of each internship, in accordance with the criteria determined by the respective department. The theoretical examination may be oral and/or written.

Make-up Examination: Make-up examinations are administered for the Theoretical committee

Final Examination, the Practical committee Final Examination, the final examinations for elective and common compulsory courses, and the clinical internship final examinations. A minimum of fifteen calendar days is provided between the final examinations and their respective make-up exams. The theoretical examination may be oral and/or written. A make-up examination replaces the original examination. The grade obtained by a student in the make-up examination is valid, even if the student takes the make-up examination for a course they have already passed with the intent of improving their grade.

Excuse Examination: An excuse may be accepted for all examinations. However, for a student to be considered excused, they must document their reason with a valid official document, and this status must be approved by the Dean's Office. Students who qualify for an excuse examination must sit for the exam on the date, at the location, and at the time determined by the Dean's Office.

Single-Course Examination: This is an examination right granted to the students who have successfully completed all other courses required but have failed only one course/committee or practical/clinical application, provided they have fulfilled the attendance requirement for that course. Upon written application, this examination is granted for the single failed course before the start of the subsequent semester.

Evaluation

The committee-end examination administered at the conclusion of each committee yields the committee result grade. The student's Theoretical Final Grade for the entire year is calculated as the sum of 60% of the weighted average of the committee result grades and 40% of the Theoretical committee Final Examination score. Consequently, the student receives a single theoretical grade for the entire year, and this grade is recorded on their transcript. When calculating the end-of-year academic achievement average, the ECTS credit value determined by the Faculty Educational Coordination Commission for all relevant theoretical committees is utilized.

The examination result for the practical committee is calculated by averaging the scores obtained from the practical examinations of the courses within that committee. This results in a single practical grade for the entire year, and this grade is recorded on the student's transcript. When calculating the end-of-year academic achievement average, the ECTS credit value determined by the Faculty Educational Coordination Commission for the relevant practical committee is utilized.

In addition to these, the examination results for the common compulsory courses and elective

courses taken during the year are recorded on the transcript. For common compulsory and elective courses, the final result is determined as the sum of 40% of the midterm average and 60% of the final examination score. Any half-point resulting from this calculation is rounded up to the nearest whole number. The results are displayed on the transcript solely as letter grades.

In the fourth and fifth years, internships are graded separately based on the end-of-internship examination and the final examination for the respective internship, and the grade obtained by the student for each internship is recorded on the transcript as a letter grade.

The committees within the Faculty's education and instruction program are prerequisite committees, and a class passing system is enforced. A student who fails to pass either the general theoretical committee or the practical committee is ineligible to take committee courses from the subsequent class level. The student must retake the committee they failed in the following academic year.

Grading

For every course taken, one of the following letter grades is assigned by the instructor as the final course grade for the semester. The coefficient equivalents and the corresponding scores out of 100 for the letter grades are presented below.

Score	Course Grade	Coefficient
90-100	AA	4
84-89	BA	3.5
76-83	BB	3
68-75	CB	2.5
60-67	CC	2
55-59	DC	1.5
50-54	DD	1
49 and below	FF	0
I-Incomplete, P-Progressing, EX-Exempt, W-Withdrawn, NA-Non-Attending		

The **(I) Incomplete** grade is assigned by the instructor to students who, despite performing successfully during the semester, have not fulfilled all required conditions for the course due to illness or another valid reason. If a student receives an (I) grade for any course, they are required to complete their deficiencies and obtain a final grade within 15 days from the date the grades were submitted to the Directorate of Student Affairs. Otherwise, the (I) grade will automatically convert to an (FF) Failure grade. However, in cases of prolonged illness or similar

circumstances, the duration of the (I) grade may be extended until the beginning of the next registration period, subject to the recommendation of the Department Head and the approval of the Faculty Administrative Board.

The **(P) Progressing** grade is awarded to students who are currently continuing their courses, and this grade is not included in grade point average calculations. The **(U) Unsatisfactory** grade is awarded to students who have not demonstrated successful performance in their courses, and this grade is not included in grade point average calculations. The **(EX) Exempt** grade is given to students who are deemed highly successful and granted exemption from courses determined by the Senate, based on the result of an exemption examination administered by the relevant department. The (EX) grade is not included in the grade point average but is shown on the transcript.

The **(NA) Non-Attending** grade is given to students who have registered for a course but have not fulfilled the attendance requirement. End-of-semester course grades are announced by the Directorate of Student Affairs.

Academic Achievement Grade Point Averages

Students' academic achievement grade point averages (GPA) are calculated at the end of the academic year. To calculate the academic achievement grade point average for a given year, the following steps are taken: first, the coefficient equivalents corresponding to a student's general theoretical letter grade, general practical letter grade, common compulsory course letter grades (if any), and elective course letter grades (if any) are multiplied by their respective ECTS credits. Subsequently, these products are summed, and the grand total is divided by the total annual credits (60 credits). This resulting value is termed the academic achievement grade point average for the year.

The cumulative (general) academic achievement grade point average (cGPA), on the other hand, is equivalent to the average of the yearly academic achievement grade point averages.

Students whose cumulative academic achievement grade point average (cGPA) is 2.00 or above are considered successful in all courses except for those in which they received an 'FF' grade.

Academic Calendar

You can access the University's 2025-2026 academic calendar by using the following extension: <https://neu.edu.tr/academic/academic-calendar/?lang=en>

Registration and Admission Procedures

The Student Affairs Units are situated within the Faculty of Pharmacy and Faculty of Communication buildings, providing services on weekdays between 08:00 and 16:00. Students can utilize these units to access general information pertaining to the Faculty, complete their registration procedures, and obtain official documents such as examination entry slips, student certificates, and transcripts.

Course Registration Procedures

Course registrations are conducted online each semester. After paying their semester tuition fees, students can complete their course selections via the online student information system accessible at <http://ogrsis.neu.edu.tr>. The student number and personal password required for system access are communicated to the students by the Student Affairs Unit. Following the students' course selections, these choices must be finalized through advisor approval. Up-to-date information and date ranges regarding the registration process are specified in the academic calendar published on the university's website. Students who fail to pay the tuition fee or submit the payment receipt to the Student Affairs Unit cannot perform transactions within the online registration system. The completion of course registrations is formalized by the academic advisors of the relevant department. Notwithstanding the online process, students may also meet face-to-face with their faculty advisors during the registration period to seek information regarding course selection and complete their registration procedures collaboratively.

Adding, Dropping, and Withdrawing from Courses

The dates for adding/dropping and withdrawing from courses are specified in the academic calendar for each semester. Within these periods, students have the right to make changes to registered courses, add new courses, or drop existing ones. These procedures can only be carried out within the dates specified in the academic calendar. Students must consult with their academic advisors to execute the relevant transactions.

Lateral and Vertical Transfer Procedures

Students who wish to register at the Faculty via lateral (horizontal) or vertical transfer must submit their applications to the Student Affairs Unit. Following the approval of the application, the student is required to submit the transcript obtained from their previous university to the accepting department. Before the commencement of instruction, the equivalence of the courses taken by the student at the previous institution to the courses in the current department is examined and finalized by the respective Department Head, the Dean, and the academic advisor. For students who are citizens of the Republic of Turkey, the transfer requirements to

Near East University are determined within the framework of the Council of Higher Education (YÖK) and the university's regulations. Detailed information is available via the following links:

- [Council of Higher Education \(YÖK\) – Lateral Transfer Rules](#)
- [Near East University – Lateral Transfer Regulation \(29.05.2023\)](#)

Course Material Sharing and Communication

All course materials, weekly content, assignments, and announcements are shared via the UZEBIM (Distance Education Information and Communication Center) platform. Students can access course materials and up-to-date information through the address (<https://uzebim.neu.edu.tr/>). Students must use the institutional email addresses assigned by the university to communicate with the academic staff. Email communication should clearly state the course name, student number, and the reason for contact. Face-to-face meetings with academic staff can be held within the specified office hours in the faculty building. The office hours schedule posted on the office door of each academic staff member helps students plan meetings at appropriate times.

Educational Resources and Facilities

Our Faculty is located within the Near East University Campus, situated at the heart of the health complex alongside the Near East Hospital and the Faculties of Medicine, Pharmacy, Health Sciences, Nursing, and Veterinary Medicine.



Our Faculty building, established in 2007 with a closed area capacity of 15.011 m², strives to create environments where students can acquire their professional competencies, alongside housing administrative, educational, clinical, and research services.

Pre-clinical practical training is conducted in the pre-clinical and simulation laboratories, which help students translate their theoretical knowledge into practice. Until 2017, our Faculty housed one pre-clinical laboratory (Pre-clinical Laboratory-I) with a capacity for 100 students and one simulation laboratory with a capacity for 70 students. With the increase in student population, another fully-equipped pre-clinical laboratory (Pre-clinical Laboratory-II) with a capacity for 110 students was constructed on the 3rd floor of the Faculty and was opened for student use as of the 2018-2019 Academic Year. Pre-clinical Laboratory-I contains one periapical imaging device, four LCD screens, one desk for faculty members and research assistants, and units where 110 students can work simultaneously; each unit is equipped with an air spray, micromotor input, and a Bunsen burner. Synchronous or asynchronous demonstration videos are shared with students via the existing LCD screens in Pre-clinical Laboratory-I and via LED monitors mounted on each unit in Pre-clinical Laboratory-II. This second laboratory also features a desk, computer, and camera equipment for faculty members to conduct live demonstrations. In the central area between the two pre-clinical laboratories, there is a plaster modeling and acrylic resin manipulation room that can be shared by students from both laboratories.

The simulation laboratory located on the 4th floor of our Faculty underwent an extensive renovation and refurbishment process in 2017, transforming it into an area where 120 students can actively work simultaneously. Our students conduct their simulation training in the units allocated to them. Each unit, in addition to phantom models, contains a fully simulated dental unit with an air-water spray, saliva ejector, high-speed handpiece outlet, low-speed handpiece outlet, pressure control panel, and a reflector light. Furthermore, the Simulation Laboratory includes a lead-walled and ventilated room containing two periapical X-ray devices.

The devices in the relevant preclinical and simulation laboratories are subjected to regular maintenance and repair procedures; any potential malfunctions are reported to the University's biomedical unit by the faculty members responsible for the laboratories.

Our students conduct their practical training for Anatomy courses in the Anatomy Laboratory housed within the Faculty of Medicine. This laboratory includes 10 work tables where 100 students can work simultaneously, 2 dissection tables, 3 cadavers, and over 100 anatomical models. In the 2nd year of their education, as part of the Fundamentals of Diseases I committee, our students participate in practical courses held in the Microbiology Laboratory

within the Faculty of Health Sciences. The equipment and opportunities provided by this laboratory allow students to practically reinforce their theoretical knowledge in microbiology. Furthermore, in the 3rd year of our students' education, the Clinical and Diagnostic Skills course utilizes the Good Medical Practice Application Laboratory within the Faculty of Medicine and the practical application laboratory within the Faculty of Nursing.

Our Faculty contains four lecture halls: two with a capacity of 130–140 students and two with a capacity of 60–80 students, each equipped with desktop computers, whiteboards, and projection devices. Theoretical courses are conducted in these halls. Additionally, the İrfan Günsel Congress Halls, located within the Faculty of Health Sciences building, with capacities of 180 and 206 people, are also utilized for education and instruction activities. The projection devices and other technical equipment in all halls are subject to regular maintenance and repair procedures; any potential malfunctions are reported to the unit responsible for technical equipment.

The prosthetic clinical laboratory located within our Faculty allows students to observe the construction processes of fixed and removable prostheses. Furthermore, the on-site CAD/CAM laboratory ensures the integration of digital technologies into dentistry, offering students the opportunity to observe advanced digital dentistry applications.

UZE BIM is an e-learning based platform developed by the Education Unit to manage and monitor the University's educational processes. This platform offers numerous services to the Faculty's students and academic staff, including access to course content, question bank creation, assignment tracking, conducting e-examinations, viewing exam results, and communication. UZE BIM also features various reporting tools for monitoring and assessing student performance. Consequently, our students can manage their learning processes more effectively and enhance their academic success. In addition to the UZE BIM student information system, our Faculty also utilizes the KEYPS software, which facilitates the planning and implementation of educational programs. This system, designed to prepare an objective and observable curriculum for students of conventional education institutions, share educational materials, and conduct measurement and evaluation entirely electronically, increases the efficiency of both students and academic staff.

As of the 2019–2020 Academic Year, examinations at our Faculty are administered in an e-exam format, utilizing modern educational technologies. These examinations are conducted face-to-face in the University's computer laboratories. Our laboratories are designed for student groups of various capacities and are equipped with a robust internet infrastructure to meet all computer and hardware needs.

The classrooms on the 3rd and 4th floors of our Faculty (with a capacity of 24 students) are designed for small groups and are used for various educational activities. These spaces are utilized for focused group studies that allow students to exchange ideas and for case discussions that enable students to enhance their problem-solving skills. These areas are also used to provide students with feedback on practical applications outside of class hours.

Student exchange is of great importance in dental education for gaining a global perspective and improving professional skills. Student exchange programs offer dental students the opportunity to experience different cultural, social, and educational systems, enabling their development on an international level. With this awareness, our Faculty participates in student exchange programs in coordination with our NCADS student association and the International Association of Dental Students (IADS).

Our NCADS student association, through its full membership in IADS since 2018, organizes unilateral and bilateral clinical exchange programs during the summer months. In accordance with the agreement made with Slovakia in July 2018, a bilateral clinical internship exchange program was carried out with the Jessenius Faculty of Medicine in Martin of Comenius University, and student exchange was mutually performed. Also in 2018, within the framework of the bilateral clinical exchange program agreed upon with the "Medical University of Warsaw - Faculty of Dentistry," three students from Poland came to our Faculty, and four students from our Faculty were sent to Poland.

A temporary halt was necessitated for student exchange programs during the Spring Semester of the 2019–2020 Academic Year due to the COVID-19 pandemic, which affected the entire world. Factors such as travel restrictions, quarantine measures, and health risks caused by the pandemic led to the suspension of many educational programs both internationally and locally. However, as of the 2023–2024 Academic Year, our Faculty has resumed student exchange activities and is actively pursuing these programs.

Campus Life

Our University contributes to the academic and social development of students by creating a wide variety of learning environments. Our campus offers a rich cultural and social setting to students by hosting diverse areas such as modern educational facilities, a library, art galleries, museums, the Atatürk Culture and Congress Center (ACCC), the Near East Pond, restaurants and cafeterias, and sports facilities. This diversity supports students' academic success while also encouraging their social interaction.

Our University has been designed with a "student-friendly campus" mentality, offering an extremely accessible learning environment to students. The campus is structured to meet all of the students' needs. Due to the proximity of living areas to one another, all amenities are within walking distance. Students can easily access classrooms, libraries, laboratories, dining halls, and social areas, thus enabling them to use their time more efficiently. Furthermore, the on-campus sports facilities, art galleries, and recreational areas allow students to participate in social and cultural activities, enabling them to maintain a balanced academic life.

To offer students the best learning and research opportunities, our University also provides free Wi-Fi service (NEU Student network) in every corner of the campus, giving students internet access in the library, cafeterias, classrooms, and social areas.

Grand Library

Established in a 15.000 m² enclosed area, the Grand Library offers world-class services with a rich collection of resources. The Library has been open to the public since its founding and provides access to over 2,250,000 printed books, as well as over 60,000 electronic journals and 1 billion electronic resources from around the world. The Library also houses 10,500 DVDs, 17 film viewing booths, 12 individual and group study rooms, 4 amphitheatres with a capacity of 1,000 people, a theatre stage for 350 people, and 1,000 study desks. Within the Library are audiovisual viewing booths, a children's library, a CMC archive room, private libraries belonging to important individuals, and a Rare Works section. Our Library was accepted as the Central Library of the Turkish World in 2007.

Our students can easily access numerous printed and digital materials thanks to our Library. Furthermore, it offers various spaces, such as individual study areas and group study rooms, to meet students' study needs. The Library collection includes 365 core reference books, journals, and/or e-books specifically in the field of dentistry. Our Library also provides access to electronic databases. Our students can easily reach these resources from within the campus. Digital library resources include international publishers such as Elsevier, Springer, and Wiley, as well as online databases like PubMed. These databases provide students with access to the most current research articles, clinical studies, and dental literature.

Restaurants and Cafeterias

In addition to the Dental Cafe, which is located within our Faculty and has a capacity for 250 people, the campus features various locations to meet students' nutritional needs. A total of 22 cafeterias, cafes, and restaurants across the campus offer a wide culinary selection. Furthermore, a supermarket, supermarket express, stationers, and a post office are located within the campus to meet students' various other needs. Banks and ATM points are also

available on campus to facilitate students' financial transactions. The ACCC (Atatürk Culture and Congress Center) and the MOE open-air stage, which host various cultural and artistic activities, are also situated within the campus. Some of the facilities include: Cafe Dental, Cafe Library, Gusto Cafe, Chicken House, The Kaffo, Pizza Pizza, Book Cafe, Bakery & Patisserie, and the 9th Floor Restaurant.

Sports Facilities

Our students can utilize the Olympic swimming pool, which operates under the Directorate of Health, Culture, and Sports located in the central campus. Furthermore, the gym and the outdoor tennis court, which are easily accessible on campus, are among the other social areas available for students' use.

- The Sports Tower offers sports opportunities for all age groups. Fitness, step, aerobics, spinning, TRX, Pilates, yoga, boxing, karate, and dance training are also complemented by nutritionist support.
- The RA25 Sports Hall hosts branches such as basketball, handball, volleyball, and badminton, as well as concerts and ceremony organizations.

Atatürk Culture and Congress Center (ACCC)

Near East University has established the Atatürk Culture and Congress Center (ACCC) with the aim of enhancing the quality and effectiveness of education. This modern facility is designed for congresses, seminars, meetings, conferences, and cultural events. ACCC serves a wide audience, from students to academics, while enriching campus life with artistic events, concerts, and theatrical performances.

Museums and Galleries

Our University also offers our students rich cultural and artistic opportunities. Our campus is home to many valuable museums and art galleries, including the Cyprus Museum of Modern Arts, the Cyprus Car Museum, the GÜNSEL Art Museum, the GÜNSEL Office Museum, the Herbarium and Natural History Museum, the Maritime History Museum, the Knife and Sword Museum, and the Cyprus Turkish National History Museum. These museums and galleries offer our students the opportunity to closely engage with art, history, and culture, while simultaneously helping them broaden their interests. All these facilities are offered to our students free of charge.

Market and Supermarket

The İKAS Supermarket, located on campus, meets the needs of students and staff with its wide variety of products. In addition to its main branch, an İKAS Express branch is located under the 1st dormitory building. Furthermore, the İKAS Express Market within the Near East Fuel station

provides 24/7 service. Operating hours for the main supermarket are 07:30–22:00.

NEU Event Park Drift Area

The NEU Event Park Drift Area, specially designed for driving enthusiasts, offers safe drift training under the supervision of professional instructors. Various training packages and special driving courses for children (aged 6–12) are available. A certificate of participation is awarded upon completion of the training. The area can also be used for special events such as birthday parties and concerts. Operating hours: Weekdays: 16:00–21:00, Weekends: 09:00–21:00. Information: 0548 821 21 24.

Accessible Cinema Hall

The renovated Accessible Cinema Hall, located within the Faculty of Communication, offers an accessible viewing experience with a capacity of 40 people. Equipped with state-of-the-art projection, a powerful sound system, and disabled ramps, the hall is suitable for film screenings and workshop events.

İKAS Patisserie & Bakery

One of the most popular spots on campus, İKAS Patisserie & Bakery offers a cozy atmosphere with a variety of hot and cold beverages and freshly made products. It has indoor seating for 20 people and an outdoor area for another 20 guests. The patisserie is also known for its custom cake orders, diet-friendly desserts, and weekend breakfast menus. Opening hours: 07:00 – 01:00.

Photocopy Services

There are several photocopy and printing centers across the campus. In units such as the Faculties of Architecture, Education, and Medicine, services include large-format AutoCAD printing, thesis binding, and scanning. Stationery and photocopy facilities are also available inside the library. Some of the contact numbers:

- Cyprus Printing Global (Hospital): 0546 990 01 03
- Nuroğlu Kirtasiye (Library): 0533 866 89 36

Bank and ATM

There are Near East Bank and Türkiye İş Bankası branch offices within campus, as well as a Ziraat Bank ATM.

Postal Service

The Post Office provides mailing and delivery services for students and personnel. Location: Ground floor of the Faculty of Economics and Administrative Sciences.

Near East Fuel Station

The fuel station located on campus offers discounted fuel for personnel.

Campus Traffic Rules and Safety

- Campus traffic is monitored 24/7.
- Traffic flows on the **left lane**.
- Traffic signs and road indicators are placed throughout the campus to ensure a safe and orderly flow of traffic. It is important to follow these signs for everyone's safety.
- Pedestrians and cyclists have priority.
- The speed limit is 40 km/h.
- Honking and loud music are prohibited.
- Vehicles must be parked only in specified areas.
- Following these rules is essential for maintaining safety and harmony on campus.

Transportation Services

The university provides free transportation services for both personnel and students. Shuttle services between the campus and Nicosia operate from 6:45 a.m. to 10:15 p.m. In addition, free transportation is available from Kyrenia, Famagusta, and Güzelyurt. Shuttle services within campus also make it easy to travel between the dormitories and the faculties.